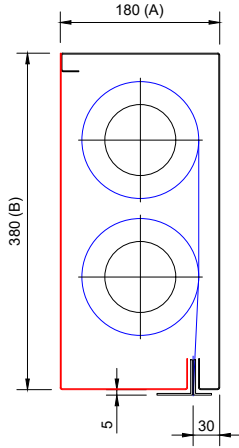


**FLAMESHIELD 1634 FIRE CURTAIN HEADBOX CONFIGURATION SECTIONS - OVERLAPPING**

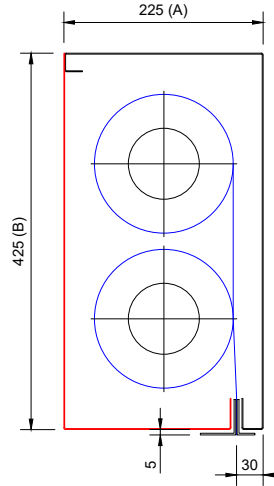
**FLAMESHIELD  
STD 180 x 380mm**

PRODUCT	MAX WIDTH (C)	MAX DROP (D)	FABRIC
FC	UNLIMITED	3800	A1 STD
EW 120	30000	3000	A1 120



**FLAMESHIELD  
STD 225 x 425mm**

PRODUCT	MAX WIDTH (C)	MAX DROP (D)	FABRIC
FC	UNLIMITED	8000	A1 STD
EW 120	30000	6000	A1 120



Drawing Title: FLAMESHIELD FIRE CURTAIN EN BS 1634 OV	Drawn By: DD
	Date: 01-05-2022
	Checked By: CE
	Date: 01-05-2022
All dimensions in millimetres - DO NOT SCALE	Drawing No: CD06F_01

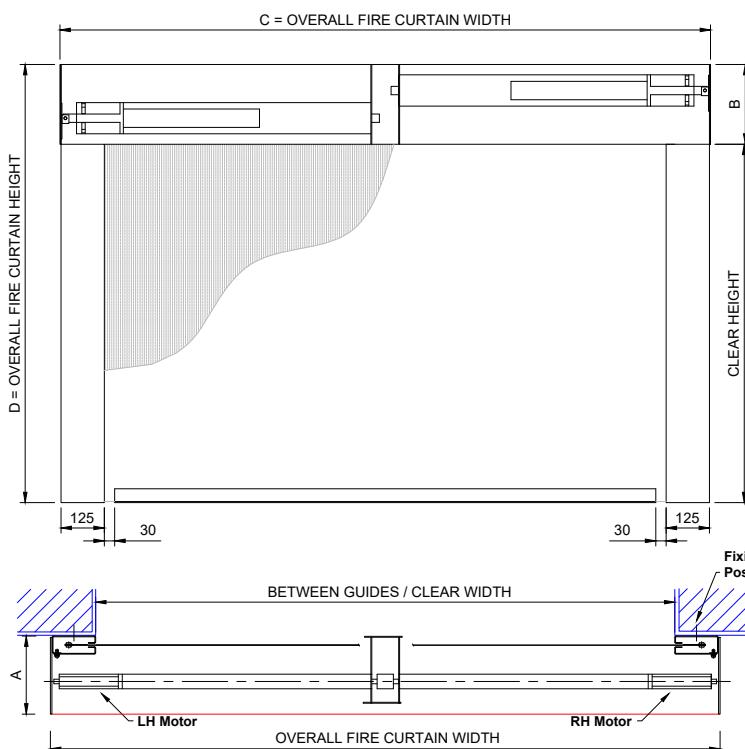


A1 Shutters Limited  
Jackson Works  
Raikes Lane Industrial Estate  
Bolton BL3 2NH  
Telephone 01204 383839

\* SIZES GREATER THAN STATED PLEASE CONTACT A1S

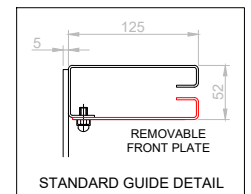
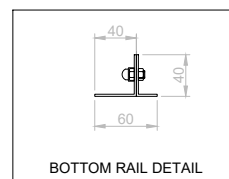
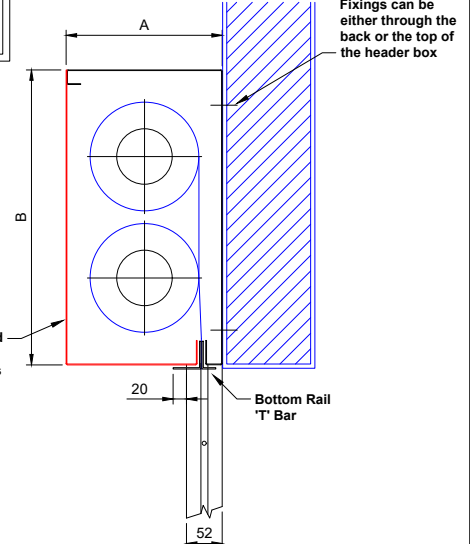
**FLAMESHIELD 1634 OVERLAPPING FIRE CURTAIN GENERAL ARRANGEMENT DRAWING: FACE FIT**

**Key:**  
 Components supplied by A1S Group  
 Structure already in situ / or required by others  
 All openings must be capable of carrying the weight of the fire curtain and be equal or greater than the fire resistance of the fire curtain assembly.



**CD06F**

Full width removable hood (Red) must be accessible for maintenance purposes



Drawing Title: FLAMESHIELD FIRE CURTAIN EN BS 1634 OV	Drawn By: DD
	Date: 01-05-2022
	Checked By: CE
	Date: 01-05-2022
All dimensions in millimetres - DO NOT SCALE	Drawing No: CD06F-02



A1 Shutters Limited  
Jackson Works  
Raikes Lane Industrial Estate  
Bolton BL3 2NH  
Telephone 01204 383839

\* ADDITIONAL SIZES AVAILABLE SUBJECT TO ASSESSMENT