

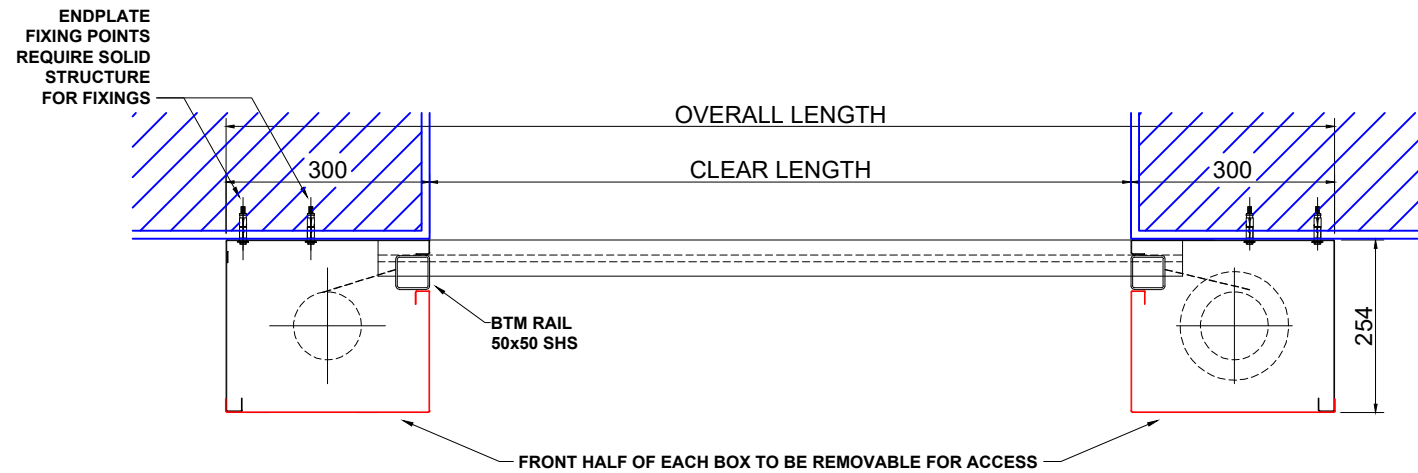
CD09F

All drawings must not be reproduced or copied without permission from A1S

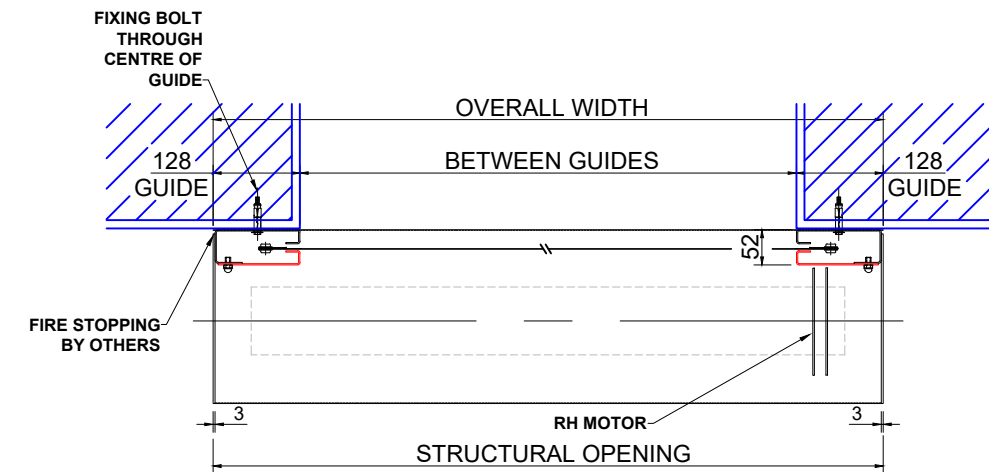
FLAMESHIELD HORIZONTAL GENERAL ARRANGEMENT DRAWING: FACE FIT

Key:
 — Components supplied by A1S Group
 — Structure already in situ / or required by others

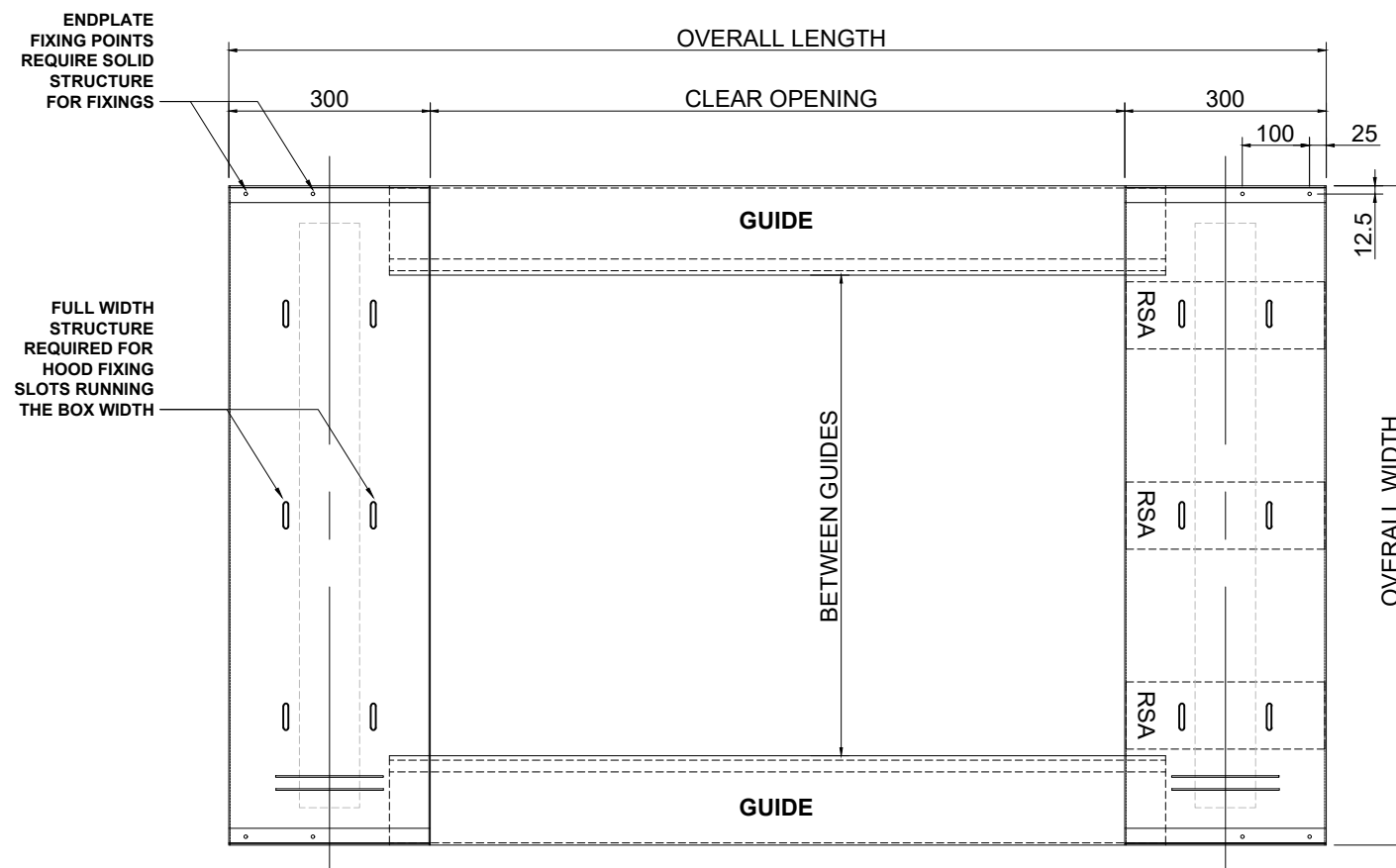
All openings must be capable of carrying the weight of the fire curtain and be equal or greater than the fire resistance of the fire curtain assembly.



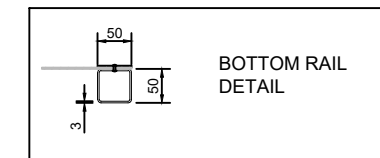
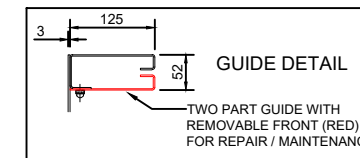
FRONT ELEVATION



END ELEVATION



PLAN



OPENING REF:

NOTE:
INTUMESCENT MASTIC SEAL REQUIRED AROUND THE FIRE CURTAIN BY OTHERS.

NOTE:
STRUCTURAL OPENING'S MUST BE FORMED PERFECTLY SQUARE IN ORDER FOR FIRE CURTAIN TO FUNCTION CORRECTLY.

120 MINUTE HORIZONTAL FIRE CURTAIN

- Inclusions:**
- P100 Control Panel
 - 24V DC Tube Motor
 - Grey Fabric Fire Curtain
 - Polyester Powder Coating
 - Polyester Powder Coated Headbox
- Options**
- Audio Visual
 - Heat Detector
 - Smoke Detector

Drawing Title: FLAMESHIELD HORIZONTAL	Drawn By: DD
Revision: REV 01	Date: 11-10-2024
	Checked By:
	Date:
All dimensions in millimetres - DO NOT SCALE	Drawing No: CD09F



A1 Shutters Limited
 Jackson Works
 Raikes Lane Industrial Estate
 Bolton BL3 2NH
 Telephone 01204 383839