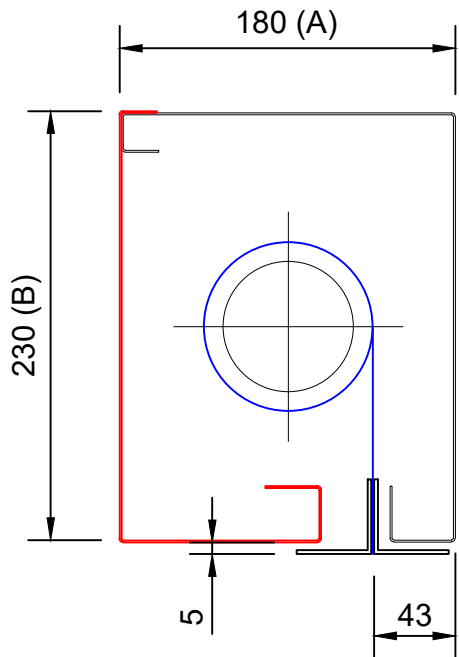


**FLAMESHIELD BS8524 FIRE CURTAIN HEADBOX CONFIGURATION SECTIONS - SINGLE**

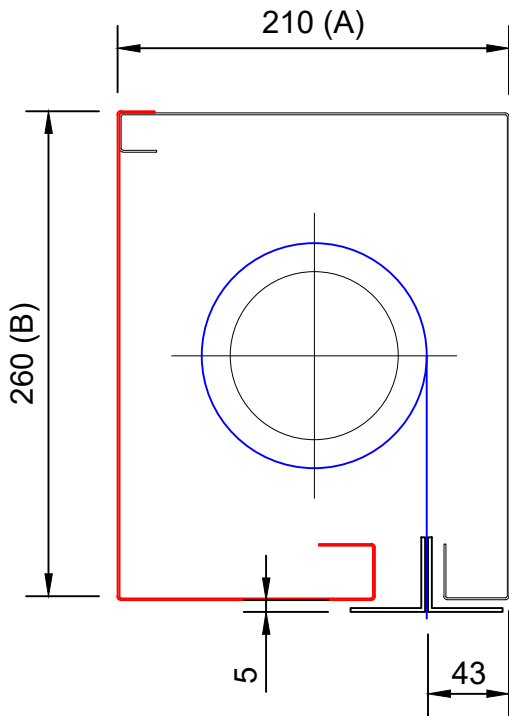
FLAMESHIELD  
STANDARD 180 x 230mm

| PRODUCT | MAX WIDTH (C) | MAX DROP (D) | FABRIC |
|---------|---------------|--------------|--------|
| FC      | 5000          | 4000         | A1 STD |
| EW 120  | 5000          | 3500         | A1 120 |



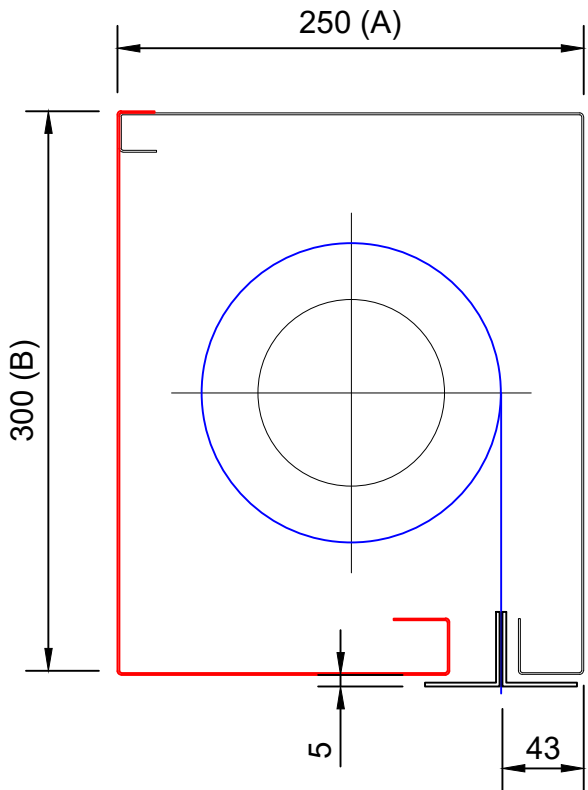
FLAMESHIELD  
STANDARD 210 x 260mm

| PRODUCT | MAX WIDTH (C) | MAX DROP (D) | FABRIC |
|---------|---------------|--------------|--------|
| FC      | 5000          | 6000         | A1 STD |
| EW 120  | 5000          | 5000         | A1 120 |




FLAMESHIELD  
STANDARD 250 x 300mm

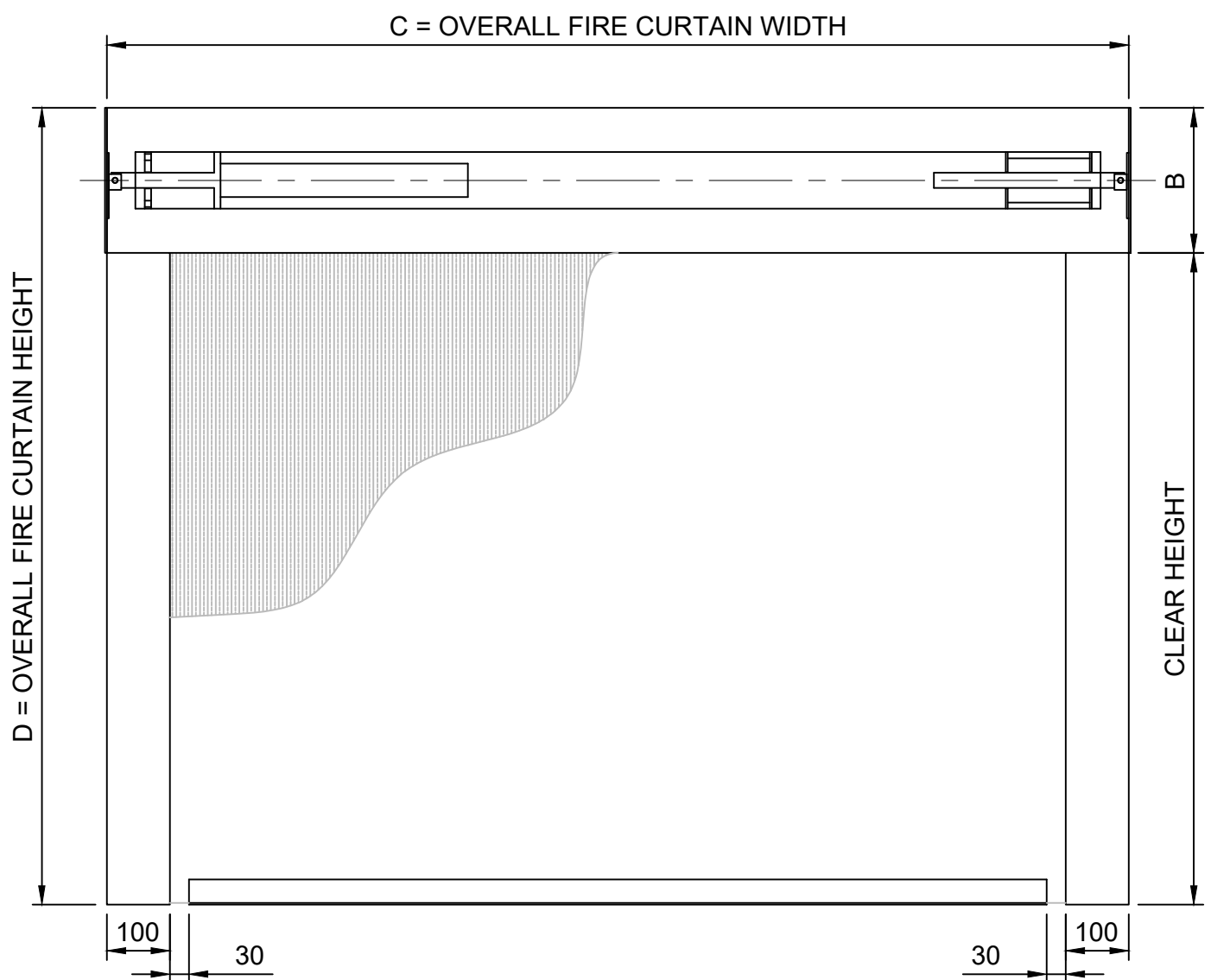
| PRODUCT | MAX WIDTH (C) | MAX DROP (D) | FABRIC |
|---------|---------------|--------------|--------|
| FC      | N/A           | N/A          | A1 STD |
| EW 120  | 5000          | 6000         | A1 120 |



\* SIZES GREATER THAN STATED PLEASE CONTACT A1S

|   |                      |   |   |
|---|----------------------|---|---|
| Drawing Title: FLAMESHIELD FIRE CURTAIN BS 8524 | Drawn By: DD         |  | A1 Shutters Limited<br>Jackson Works<br>Raikes Lane Industrial Estate<br>Bolton BL3 2NH<br>Telephone 01204 383839 |
|   | Date: 22-10-2024     |   |   |
|   | Checked By: CE       |   |   |
|   | Date: 22-10-2024     |   |   |
| All dimensions in millimetres - DO NOT SCALE    | Drawing No: CD01F_01 |   |   |

FLAMESHIELD BS8524 FIRE CURTAIN GENERAL ARRANGEMENT DRAWING: FACE FIT

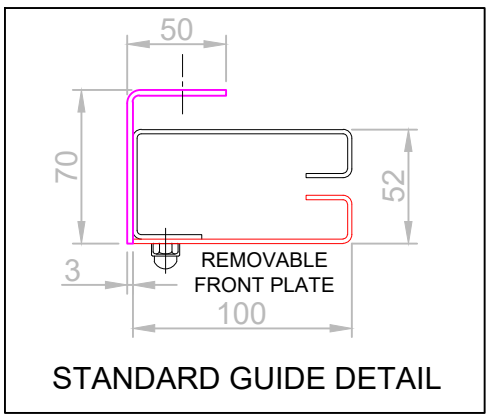
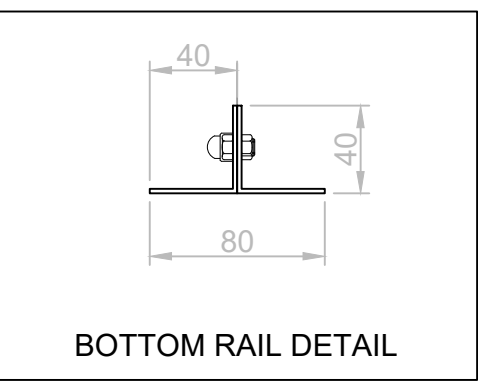
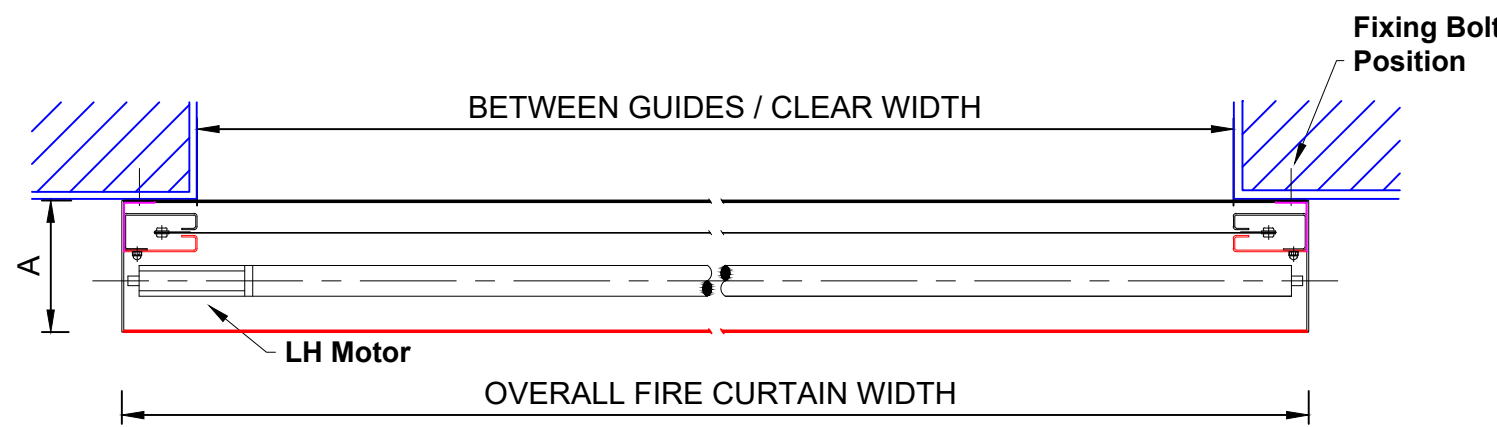
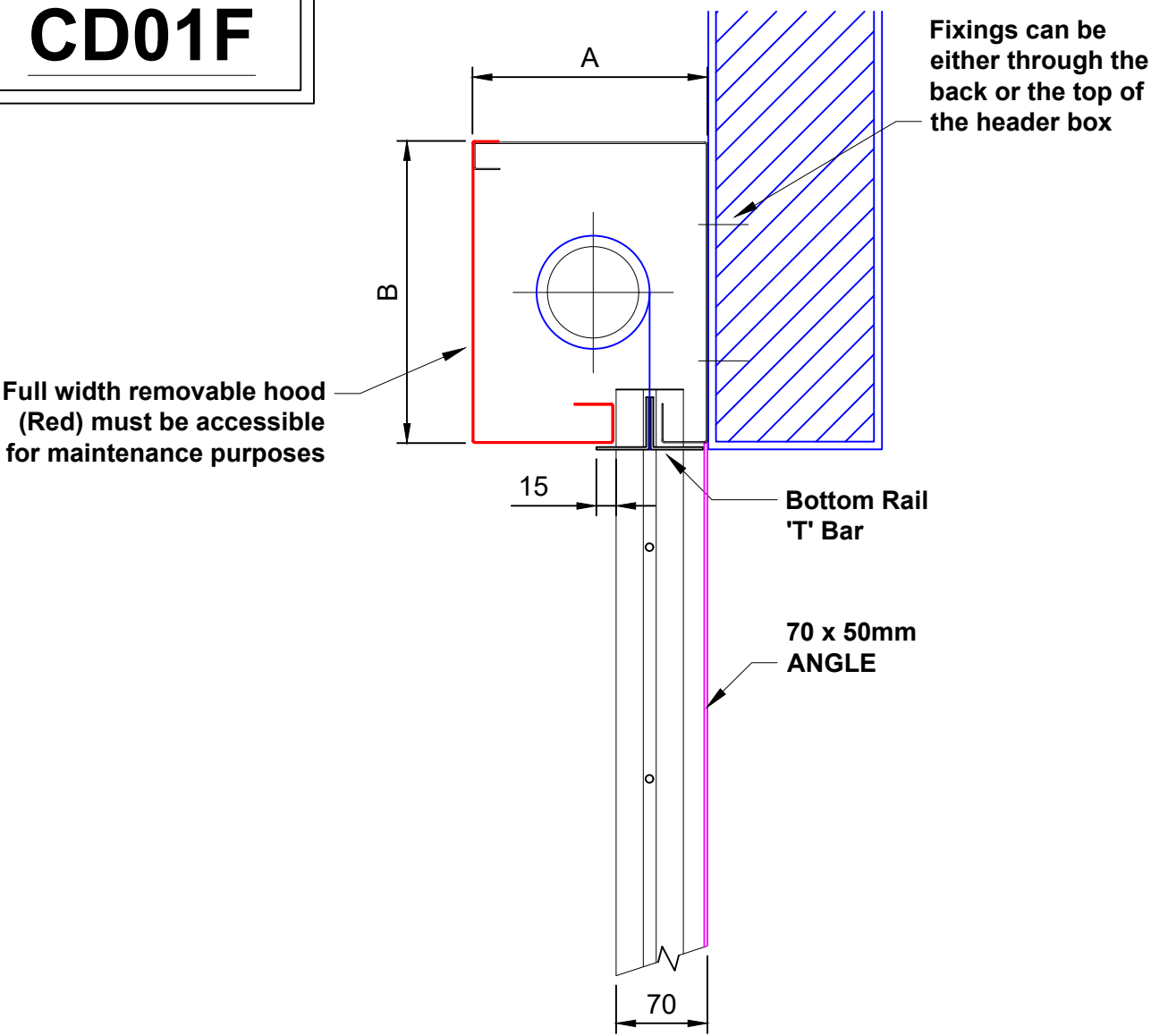


CD01F

**Key:**

- Components supplied by A1S Group
- Structure already in situ / or required by others

All openings must be capable of carrying the weight of the fire curtain and be equal or greater than the fire resistance of the fire curtain assembly.



\* ADDITIONAL SIZES AVAILABLE SUBJECT TO ASSESSMENT

|   |                      |
|---|----------------------|
| Drawing Title: FLAMESHIELD FIRE CURTAIN BS 8524 | Drawn By: DD         |
|   | Date: 22-10-2024     |
|   | Checked By: CE       |
|   | Date: 22-10-2024     |
| All dimensions in millimetres - DO NOT SCALE    | Drawing No: CD01F-02 |

A1 Shuttters Limited  
Jackson Works  
Raikes Lane Industrial Estate  
Bolton BL3 2NH  
Telephone 01204 383839