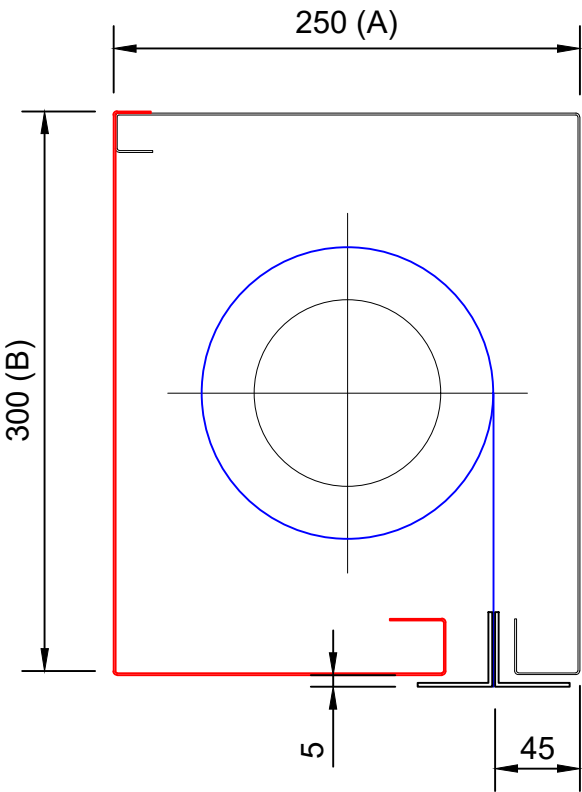


FLAMESHIELD 8524 FIRE CURTAIN MAX SYSTEM HEADBOX CONFIGURATION SECTIONS - STANDARD AND SMOKE SEALS

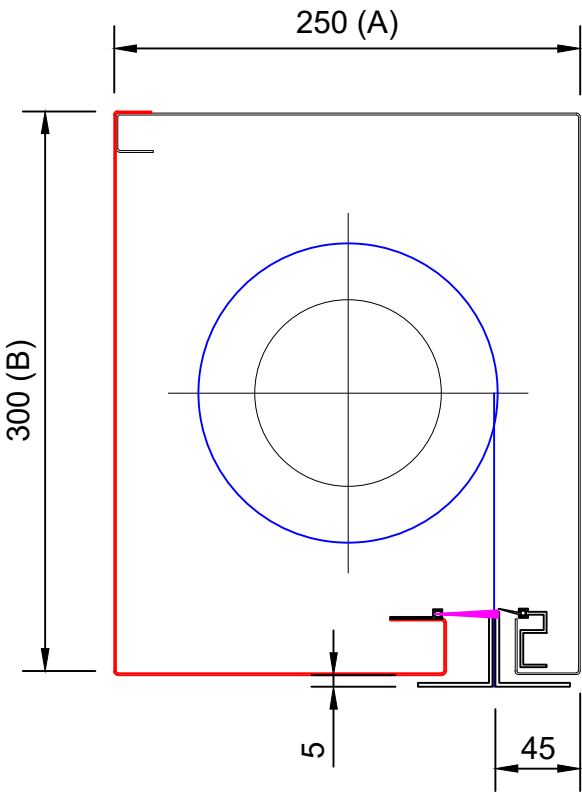
FLAMESHIELD MAX  
STANDARD 254 x 300mm

PRODUCT	MAX WIDTH (C)	MAX DROP (D)	FABRIC
FC	10000	5000	A1 STD



FLAMESHIELD MAX SS  
STANDARD 254 x 300mm

PRODUCT	MAX WIDTH (C)	MAX DROP (D)	FABRIC
FC	10000	5000	A1 STD



\* ADITONAL SIZES AVAILABLE SUBJECT TO ASSESMENT  
\* ADDITIONAL ASSESSMENT IS REQUIRED FOR DROP LENGTH OVER 5000mm

Drawing Title: FLAMESHIELD FIRE CURTAIN BS 8524 MAX/S	Drawn By: DD
	Date: 22-10-2024
	Checked By: CE
	Date: 22-10-2024
All dimensions in millimetres - DO NOT SCALE	Drawing No: CD02MR_01



A1 Shutters Limited  
Jackson Works  
Raikes Lane Industrial Estate  
Bolton BL3 2NH  
Telephone 01204 383839

FLAMESHIELD BS8524 MAX / S FIRE CURTAIN GENERAL ARRANGEMENT DRAWING: REVEAL FIT

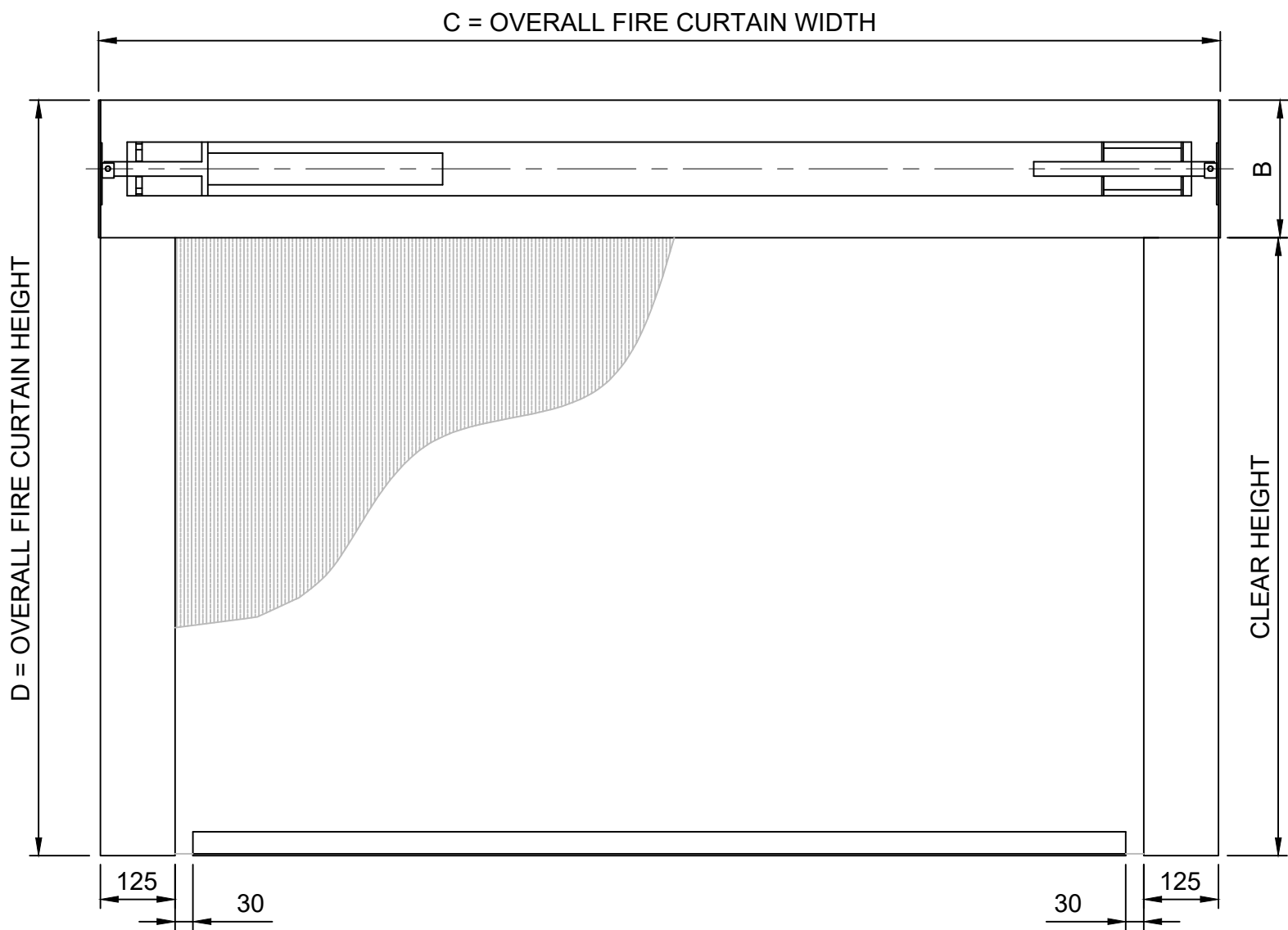
Key:

Components supplied by A1S Group

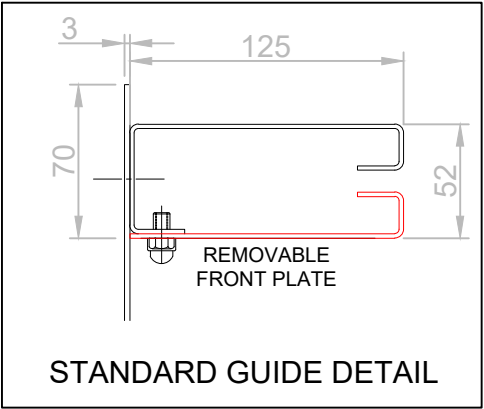
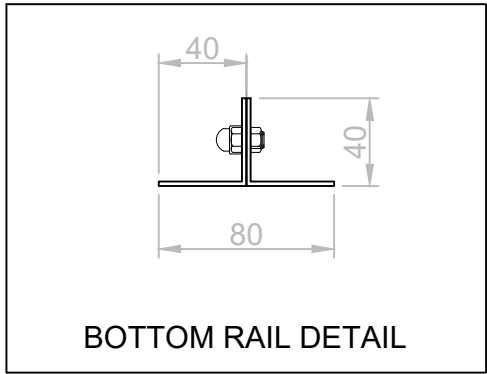
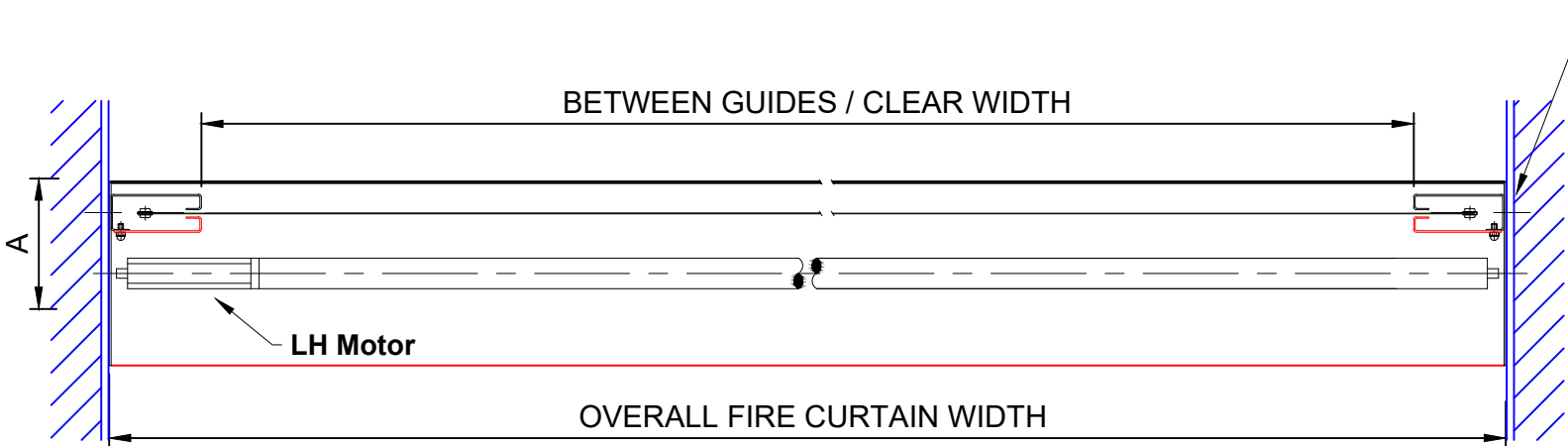
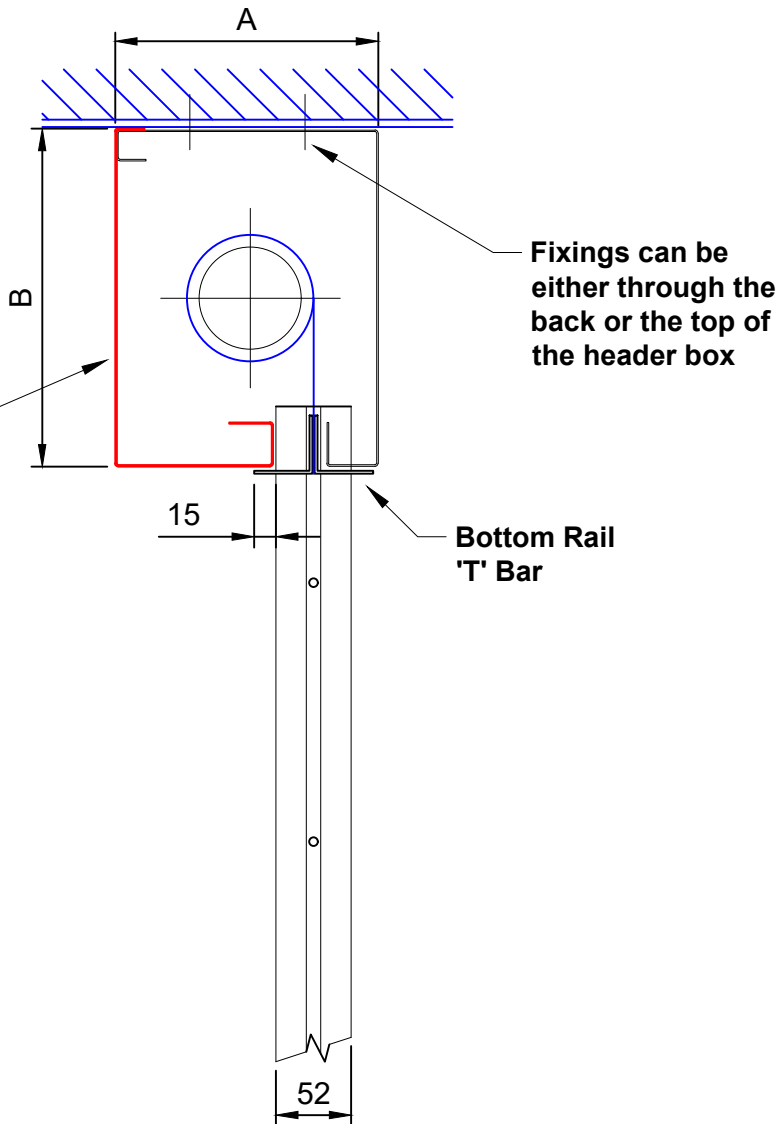
Structure already in situ / or required by others

All openings must be capable of carrying the weight of the fire curtain and be equal or greater than the fire resistance of the fire curtain assembly.

CD02MR



Full width removable hood (Red) must be accessible for maintenance purposes



\* ADDITIONAL SIZES AVAILABLE SUBJECT TO ASSESSMENT

Drawing Title: FLAMESHILED FIRE CURTAIN BS 8524 MAX/S	Drawn By: DD
	Date: 22-10-2024
	Checked By: CE
	Date: 22-10-2024
All dimensions in millimetres - DO NOT SCALE	Drawing No: CD02MR-02

A1S

GROUP

A1 Shutters Limited  
Jackson Works  
Raikes Lane Industrial Estate  
Bolton BL3 2NH  
Telephone 01204 383839