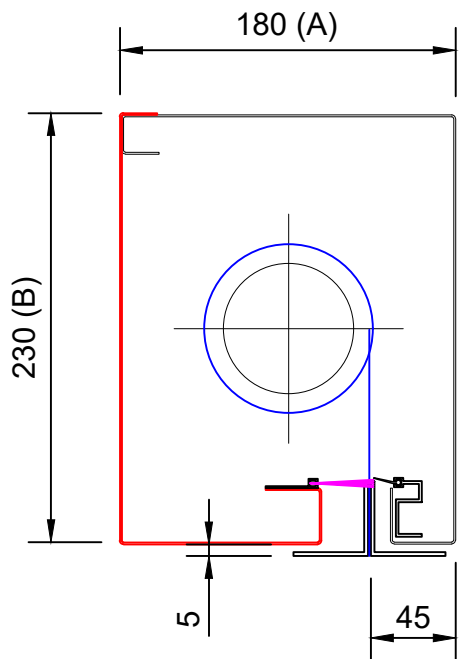


**FLAMESHIELD BS8524 S FIRE CURTAIN HEADBOX CONFIGURATION SECTIONS - SINGLE**

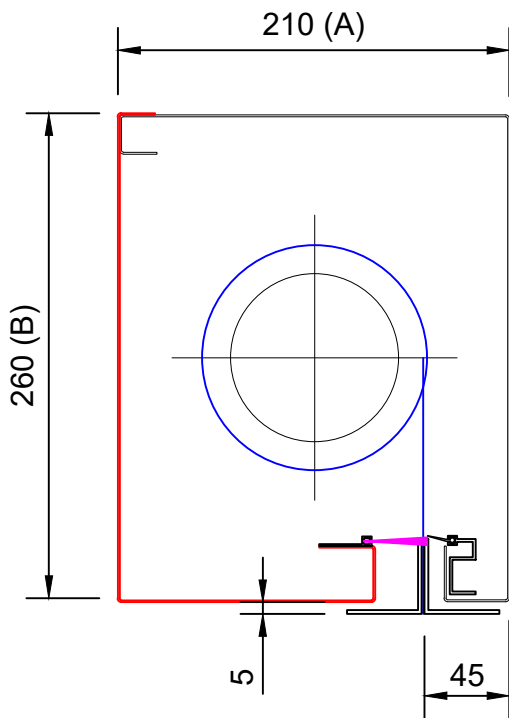
FLAMESHIELD  
STANDARD 180 x 230mm

| PRODUCT | MAX WIDTH (C) | MAX DROP (D) | FABRIC |
|---------|---------------|--------------|--------|
| FC      | 5000          | 4000         | A1 STD |
| EW 120  | 5000          | 3500         | A1 120 |



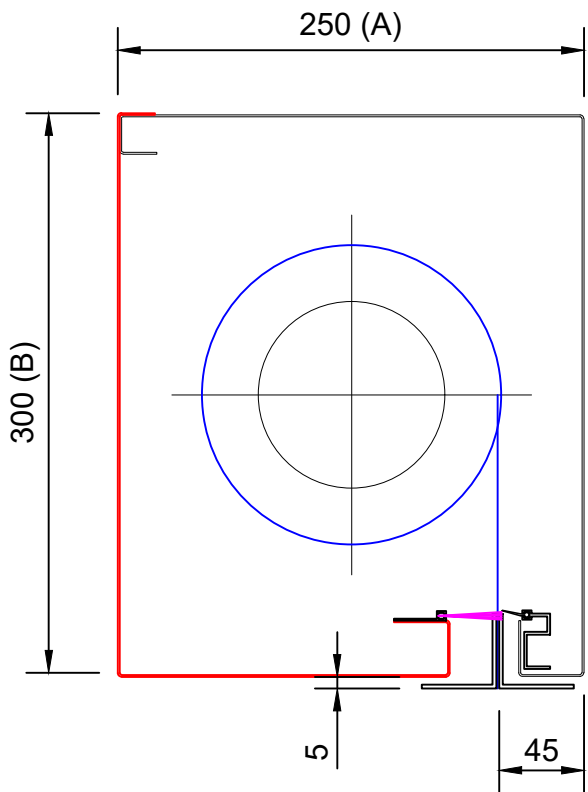
FLAMESHIELD  
STANDARD 210 x 260mm

| PRODUCT | MAX WIDTH (C) | MAX DROP (D) | FABRIC |
|---------|---------------|--------------|--------|
| FC      | 5000          | 6000         | A1 STD |
| EW 120  | 5000          | 5000         | A1 120 |



FLAMESHIELD  
STANDARD 250 x 300mm

| PRODUCT | MAX WIDTH (C) | MAX DROP (D) | FABRIC |
|---------|---------------|--------------|--------|
| FC      | N/A           | N/A          | A1 STD |
| EW 120  | 5000          | 6000         | A1 120 |



\* SIZES GREATER THAN STATED PLEASE CONTACT A1S

|   |                      |
|---|----------------------|
| Drawing Title: FLAMESHIELD FIRE CURTAIN BS 8524 S | Drawn By: DD         |
|   | Date: 22-10-2024     |
|   | Checked By: CE       |
|   | Date: 22-10-2024     |
| All dimensions in millimetres - DO NOT SCALE      | Drawing No: CD02R_01 |



A1 Shutters Limited  
Jackson Works  
Raikes Lane Industrial Estate  
Bolton BL3 2NH  
Telephone 01204 383839

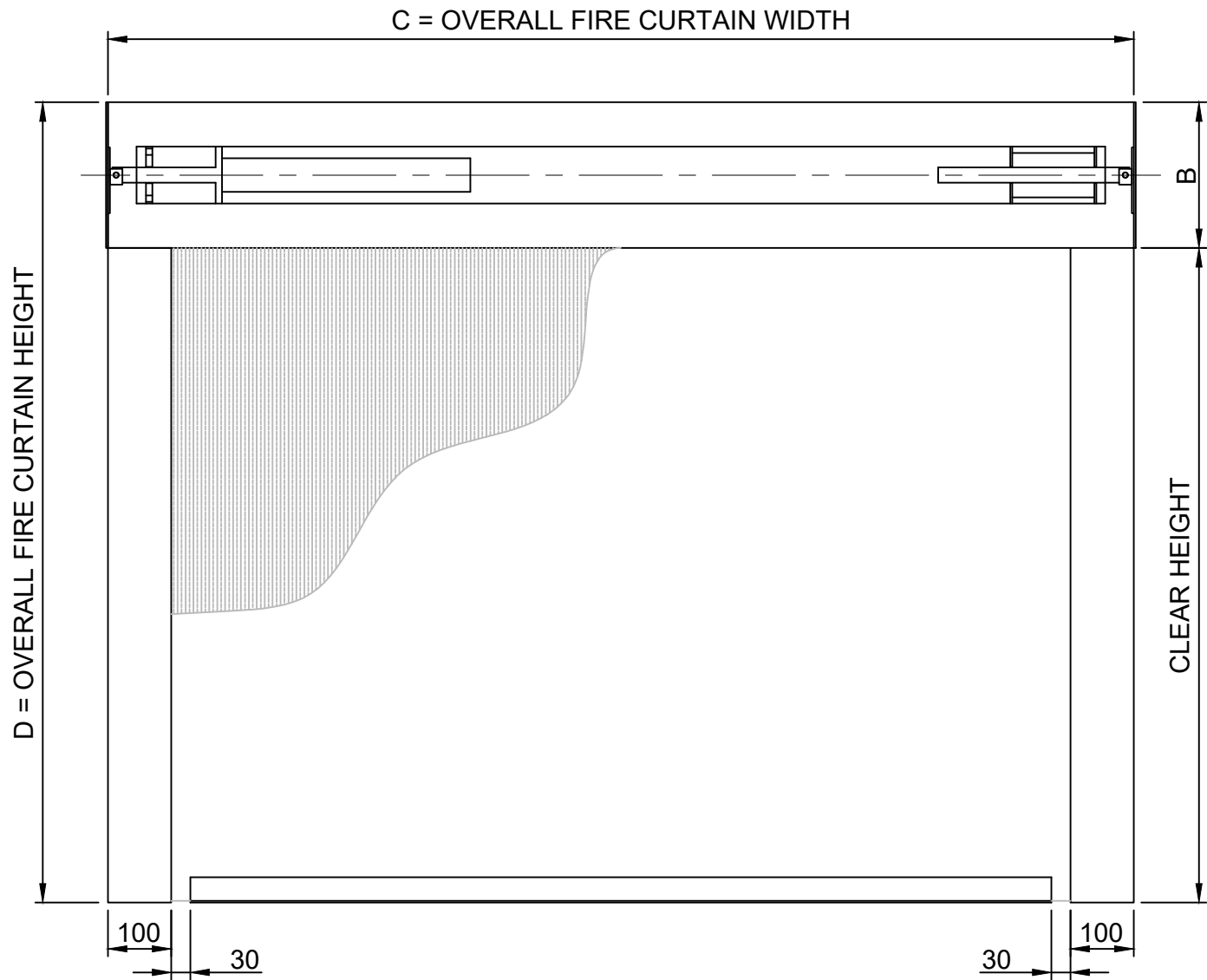
FLAMESHIELD BS8524S FIRE CURTAIN GENERAL ARRANGEMENT DRAWING: REVEAL FIT

**Key:**  

Components supplied by A1S Group

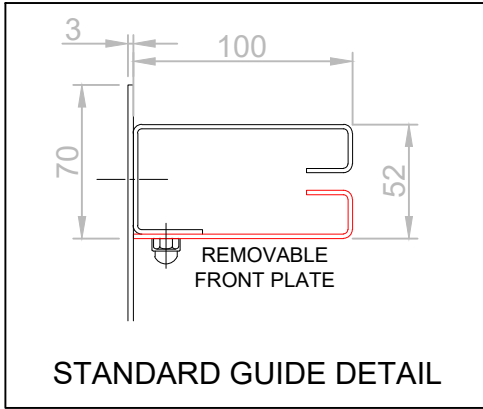
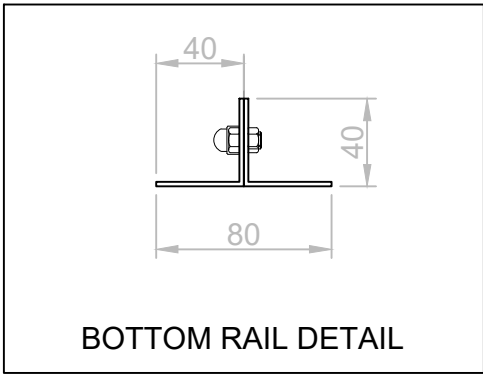
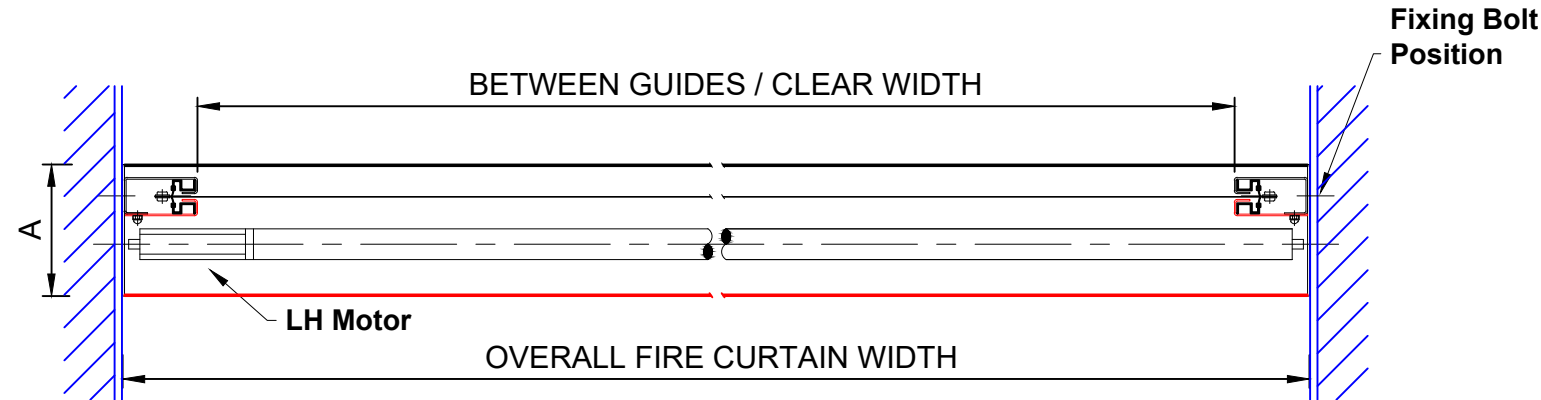
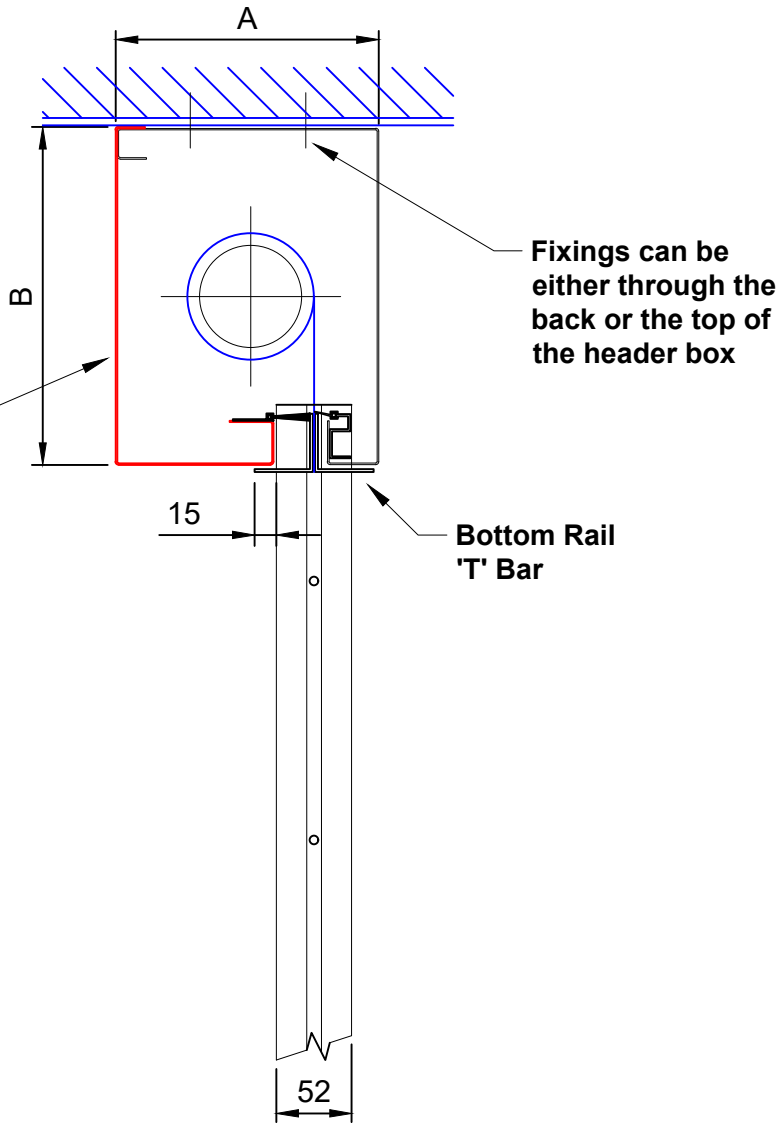
Structure already in situ / or required by others

All openings must be capable of carrying the weight of the fire curtain and be equal or greater than the fire resistance of the fire curtain assembly.



CD02R

Full width removable hood (Red) must be accessible for maintenance purposes



\* ADDITIONAL SIZES AVAILABLE SUBJECT TO ASSESSMENT

|   |                      |
|---|----------------------|
| Drawing Title: FLAMESHIELD FIRE CURTAIN BS 8524 S | Drawn By: DD         |
|   | Date: 22-10-2024     |
|   | Checked By: CE       |
|   | Date: 22-10-2024     |
| All dimensions in millimetres - DO NOT SCALE      | Drawing No: CD02R-02 |

A1 Shutters Limited  
Jackson Works  
Raikes Lane Industrial Estate  
Bolton BL3 2NH  
Telephone 01204 383839