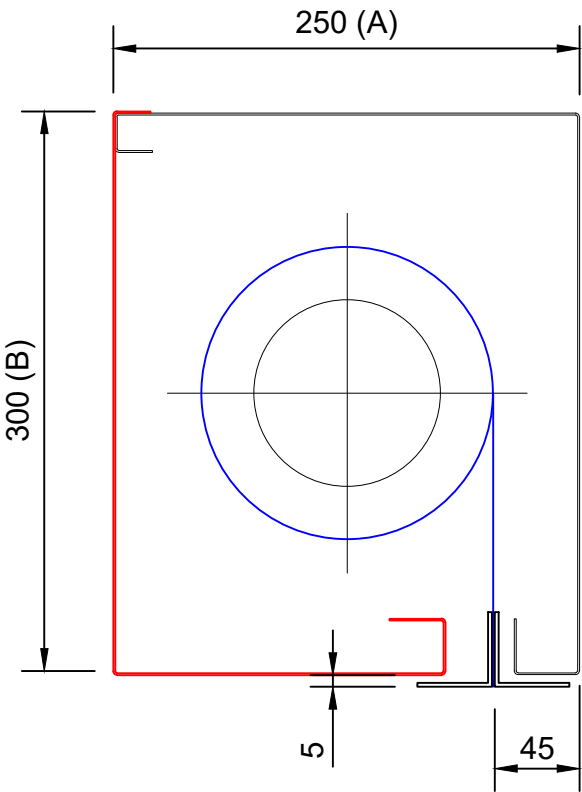


FLAMESHIELD EVO 1 FIRE CURTAIN MAX SYSTEM HEADBOX CONFIGURATION SECTIONS - STANDARD AND SMOKE SEALS

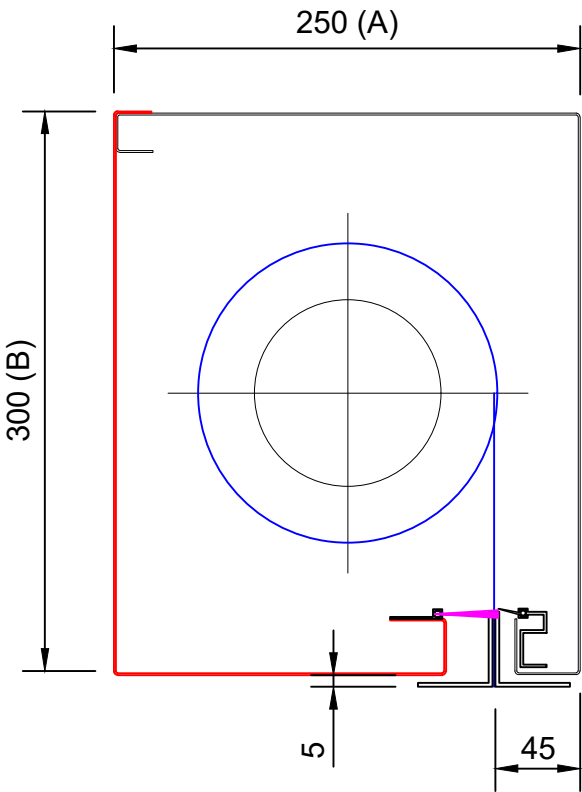
FLAMESHIELD MAX
STANDARD 254 x 300mm

| PRODUCT | MAX WIDTH (C) | MAX DROP (D) | FABRIC |
|---------|---------------|--------------|--------|
| FC | 10000 | 5000 | A1 STD |



FLAMESHIELD MAX SS
STANDARD 254 x 300mm

| PRODUCT | MAX WIDTH (C) | MAX DROP (D) | FABRIC |
|---------|---------------|--------------|--------|
| FC | 10000 | 5000 | A1 STD |



* ADITONAL SIZES AVAILABLE SUBJECT TO ASSESMENT
* ADDITIONAL ASSESSMENT IS REQUIRED FOR DROP LENGTH OVER 5000mm

| | |
|---|-----------------------|
| Drawing Title: FLAMESHIELD EVO 1 MAX / S FIRE CURTAIN | Drawn By: DD |
| | Date: 22-10-2024 |
| | Checked By: CE |
| | Date: 22-10-2024 |
| All dimensions in millimetres - DO NOT SCALE | Drawing No: CD05MR_01 |



A1 Shutters Limited
Jackson Works
Raikes Lane Industrial Estate
Bolton BL3 2NH
Telephone 01204 383839

FLAMESHIELD EVO 1 MAX / S FIRE CURTAIN GENERAL ARRANGEMENT DRAWING: REVEAL FIT

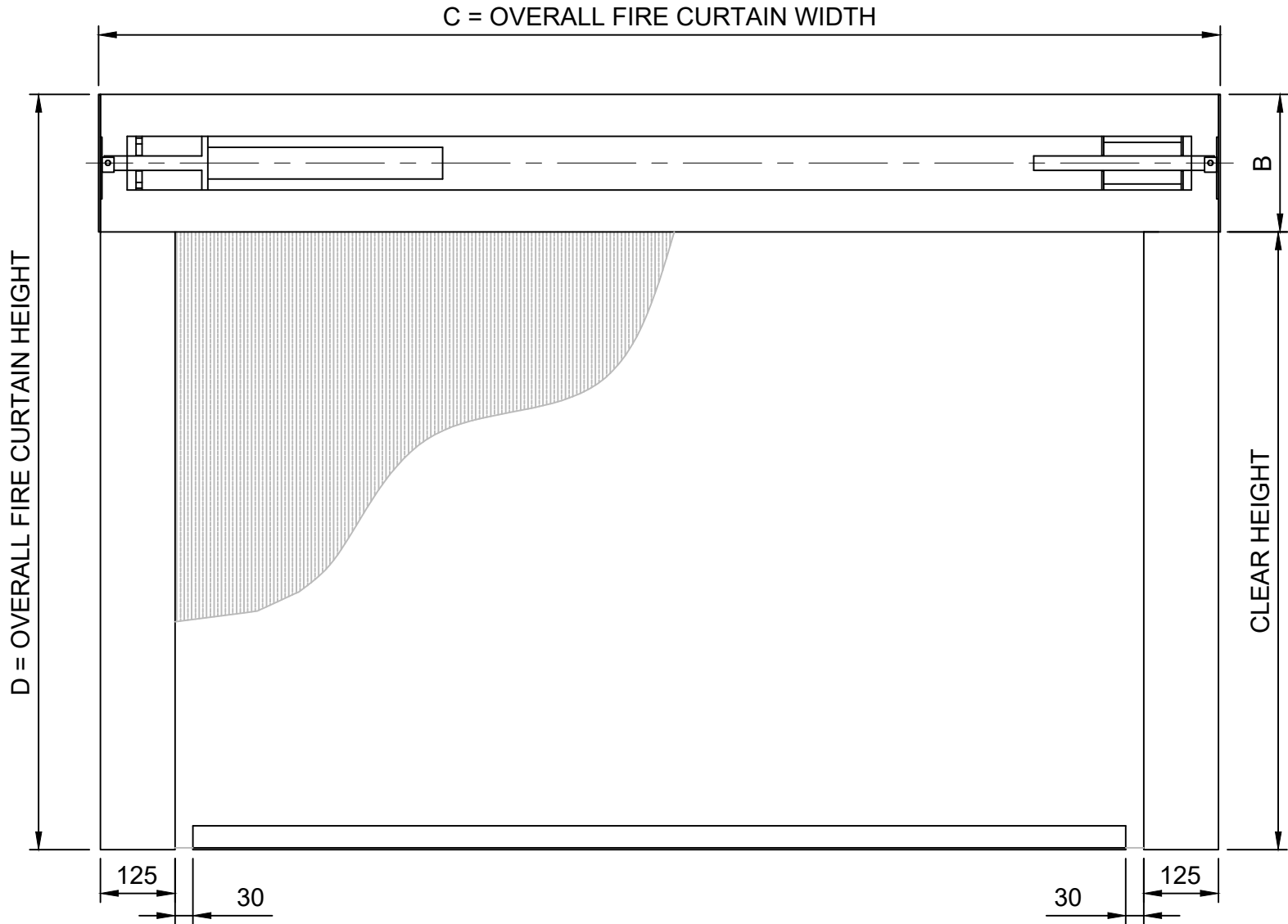
Key:

Components supplied by A1S Group

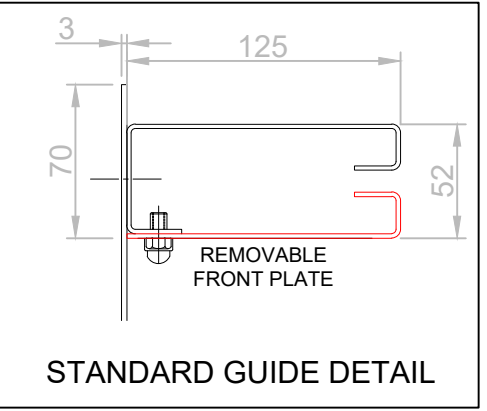
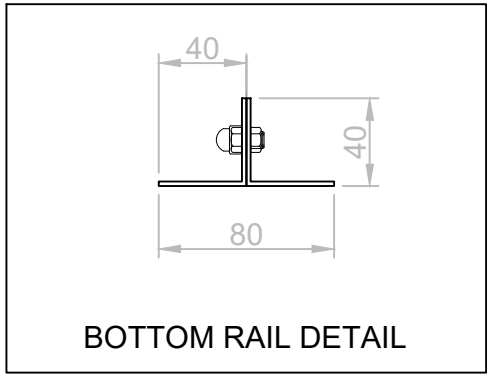
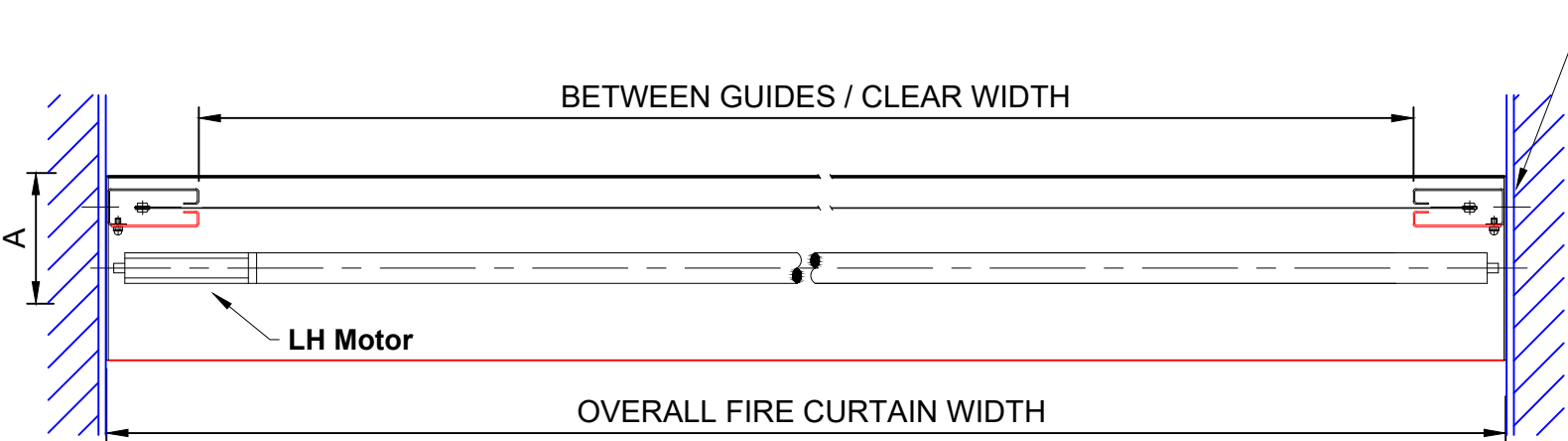
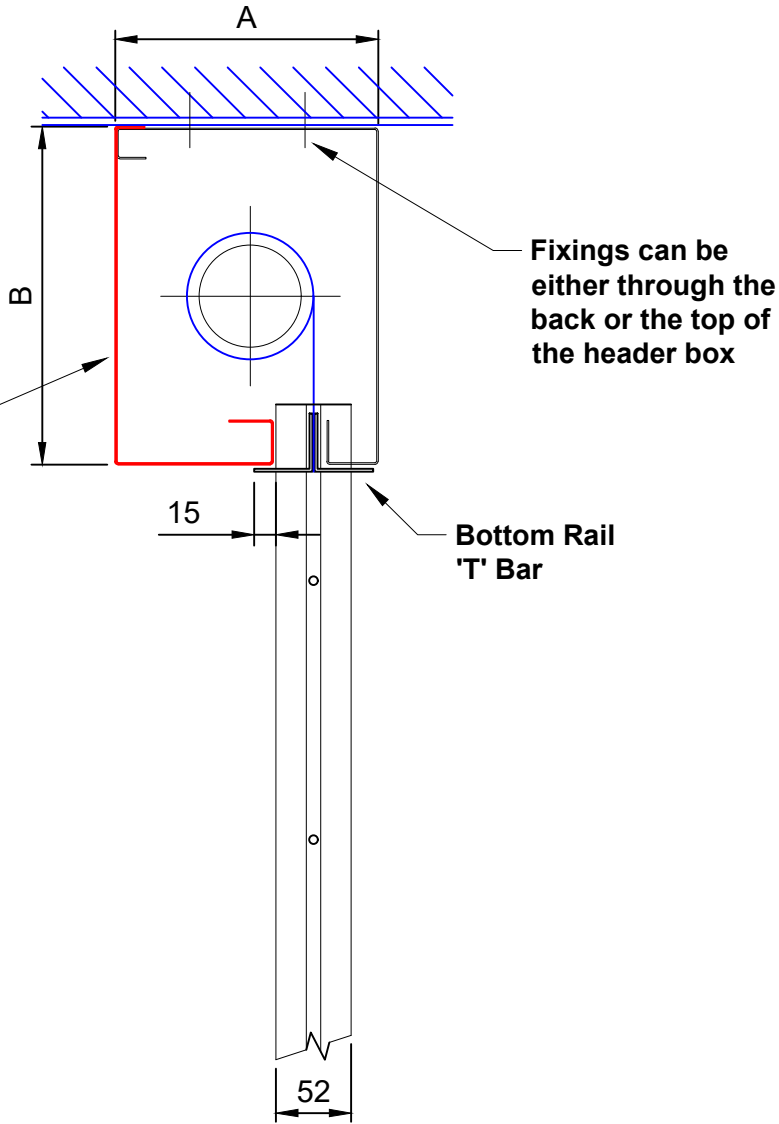
Structure already in situ / or required by others

All openings must be capable of carrying the weight of the fire curtain and be equal or greater than the fire resistance of the fire curtain assembly.

CD05MR



Full width removable hood (Red) must be accessible for maintenance purposes



* ADDITIONAL SIZES AVAILABLE SUBJECT TO ASSESSMENT

| | |
|---|-----------------------|
| Drawing Title: FLAMESHIELD EVO 1 MAX / S FIRE CURTAIN | Drawn By: DD |
| | Date: 22-10-2024 |
| | Checked By: CE |
| | Date: 22-10-2024 |
| All dimensions in millimetres - DO NOT SCALE | Drawing No: CD05MR-02 |

A1S

GROUP

A1 Shutters Limited
Jackson Works
Raikes Lane Industrial Estate
Bolton BL3 2NH
Telephone 01204 383839